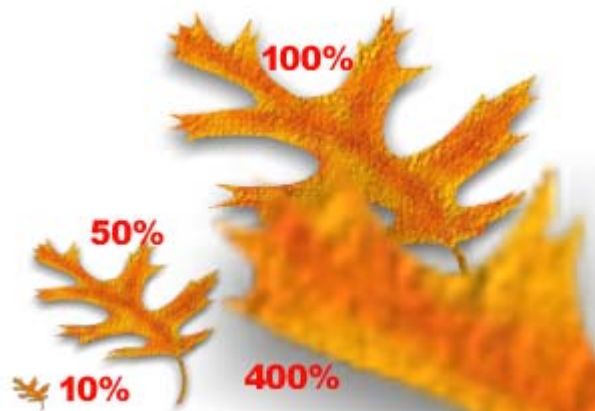


One Rank Leaf Nozzle

Something to remember when creating nozzles, the smaller the file the faster they load. The example below shows leaves at **10%/50%/100% & 400%**. At **400%** only the tip of the leaf is shown for comparison. All nozzles lose focus as you increase or decrease their size. Painter allows you to scale them from **2% to 400%**. To be certain your nozzle images will be in focus and large enough for close up detail work create oversized images for this purpose. The trade offs are slow loading files that look nice but you have to create more of them to get the job done.

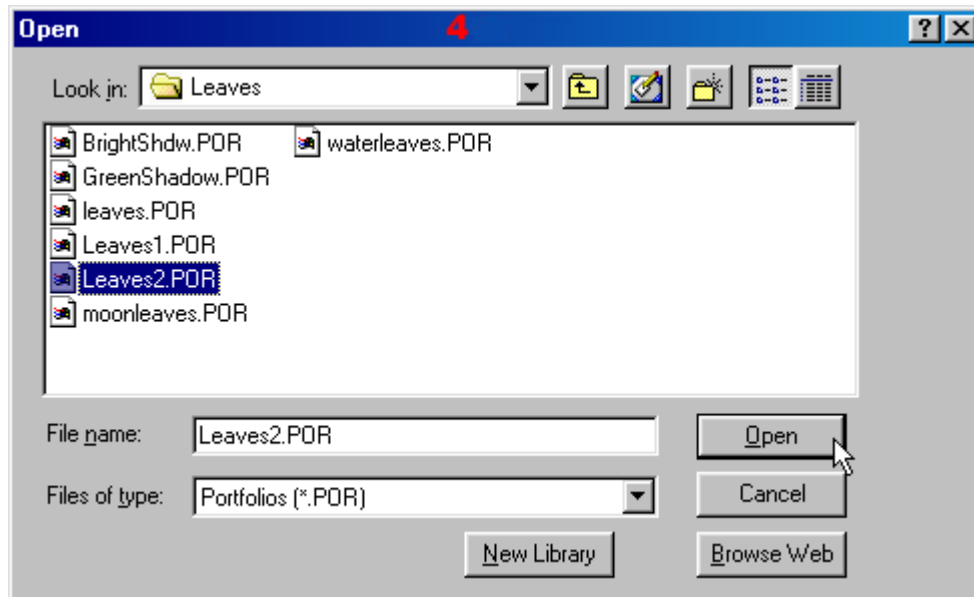


Open a new file at 400X400 & 72DPI. Click on the **Objects (1)** palette. Click on The word **Floater**. A menu **(2)** will appear. Click on **Floater Portfolio...** or press **Ctrl+7**. The **Objects:Floaters (3)** palette will open.

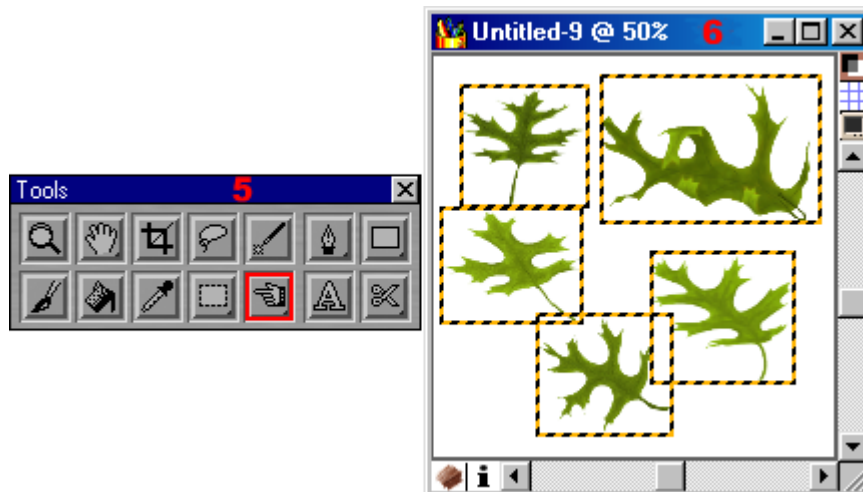


Click on the window at the bottom of the **Objects:Floaters (3)(Hand)** palette.

From the menu that appears select **Load Library...** The **Open** dialog box (4) appears.

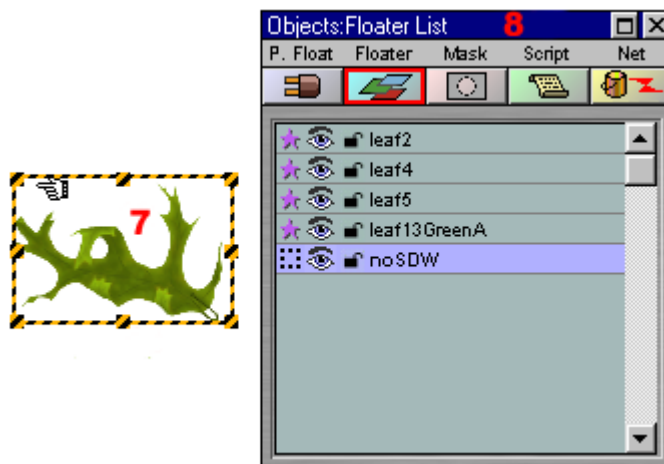


Go to the folder where you copied the **Leaves2.POR** file. Then click on **Leaves2.POR**. Click **Open**. Press the “F” Key or click on the **Floater Adjuster Tool** located in the **Tools** (5) palette. Drag all 5 floaters (without a shadow) into your working window. You should have five leaves that are different shades of green. Your painting will look like this (6): Now is a good time to save this file. I try to save a version of my work after each major step so I won't have so much to re-do if I run into unforeseen problems. Saving your work is the best habit you can develop because most programs don't auto-save your files at given intervals.

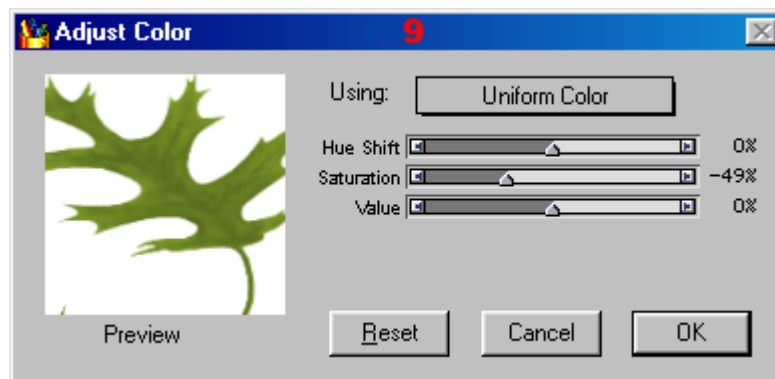


One leaf is bigger than the other four. Click on the background with the **Floater Adjuster Tool (5)** to deselect the floaters. To make the large one smaller, select the leaf and click on **Effects/Orientation/Free Transform** in the **Painter Program Bar**. A new bounding box with 8 handles appears around the leaf (**7**). Drag any corner handle in the direction you want to resize it. Hold down the **Shift Key** to maintain exact proportions of the image. The side handles resize one dimension, up or down, in or out. Hold down the **Ctrl Key** to rotate the image from any corner or slant the image from any side handle. The **Objects:Floater List (8)** shows the 8 handled icon next to the name of the leaf so you can easily identify which floaters are in the **Transform** state..

To return the floater to its normal state click on **Effects/Orientation/Commit Transform**.



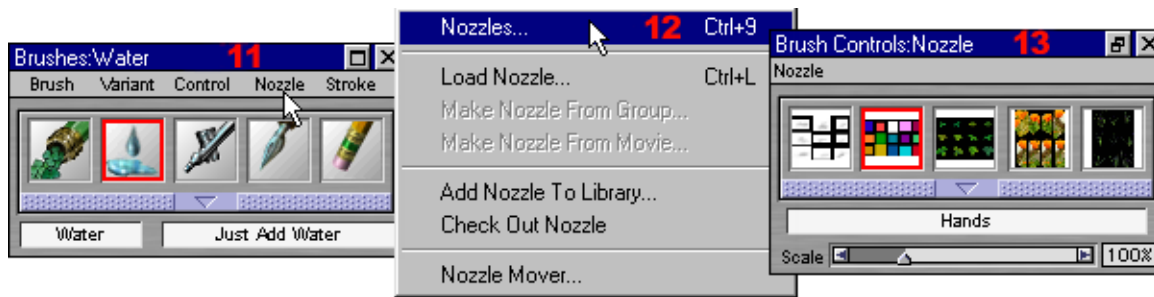
To change the two lighter leaves to a darker shade select one then click on **Effects/Tonal Control/Adjust Colors...** The **Adjust Color** dialog box (**9**) will appear. Use these settings after you play around a little with the settings to see what they will do.



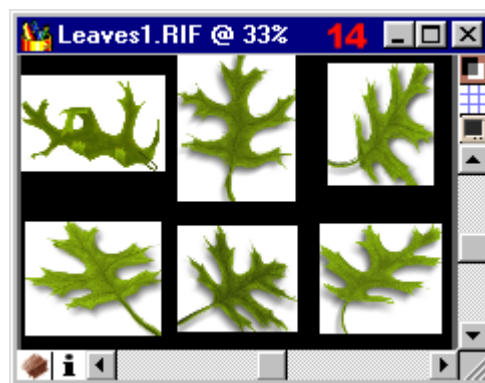
Group your leaf floaters by dragging around all of them with the **Floater Adjuster Tool (5)**. In the **Objects:Floater List (10)** palette click on the **Group Button** and then the **Trim Button**.



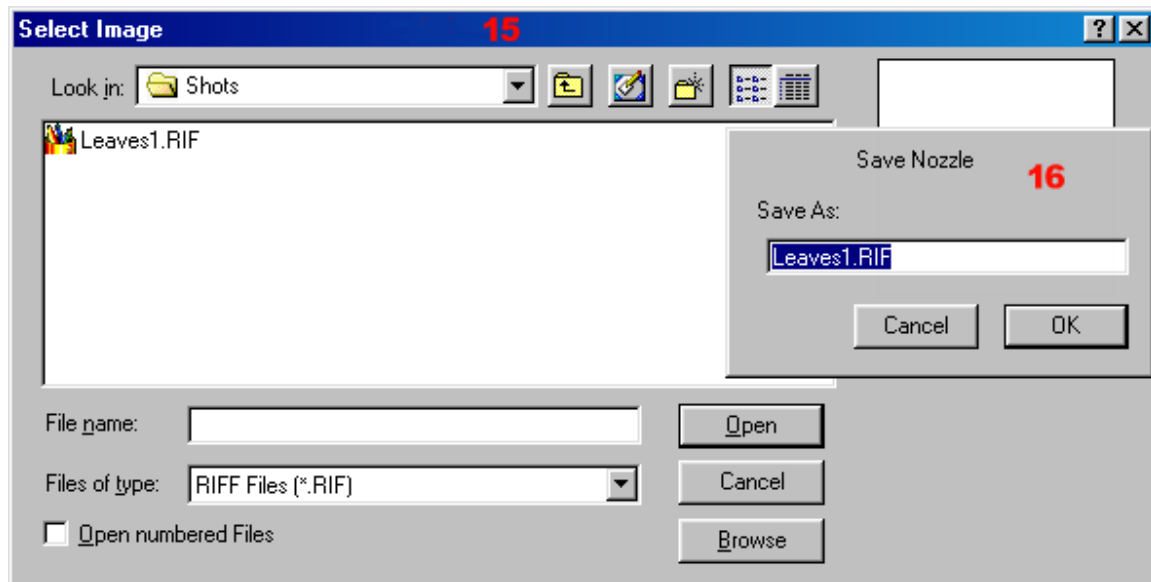
Click on the word **Nozzle** in the **Brushes:Water (11)**, a menu appears (12). Click on the word **Nozzles...** or press **Ctrl + 9** and the **Brush: Controls Nozzle (13)** palette appears.



Go back the menu (12) and click on **Make Nozzle From Group...** A source file is generated (14). Name the file **Leaves1.RIF**. Remember the folder in which you save this file.



Open a new file. Size is not important. Go back the menu (12) and click on **Load Nozzle...or press Ctrl + L**. The **Select Image** dialog box (15) will appear. Select the **Leaves1.RIF** file and click the **Open Button**. **Stop! Don't do anything more!** Some of you may be using Painter4 for this tutorial. I have made it a habit to always load any new nozzles I create, then immediately add them to a library. In menu (12) click on **Add Nozzle To Library...**The **Save Nozzle** dialog box appears (16). Keep the existing name or give it a new one and click **OK**. Now we can test our new nozzle.



In the **Brushes:** palette (17) select the **Image Hose** tool. In the **Brush Controls: Nozzle** palette (18) select **Leaves1.RIF** as your nozzle. Example (19) Shows how the leaves will look at **Scale** slider settings of **12%/25%/50%/75% & 100%**.



You have completed this tutorial and it wasn't as hard as you may have thought in the beginning. Using what you have learned repeat this tutorial but this time add a drop shadow to each leaf. If you saved your work go back to it, drag around all your leaves and **Group** them.

Go to the **Program Tool Bar**, select **Effects/Objects/Create Drop Shadow...** The **Drop Shadow** dialog box (20) will appear. In my example I kept the default setting. Be sure to check **Collapse to one layer**. Click **OK**. Play around with the settings to see what types of shadows you can create. Finish the rest of the steps and you now have two nozzles for you painting pleasure.

